

1 Quantitative Evaluation of Emission Control of Primary and  
2 Secondary Organic Aerosol Sources during Beijing 2008  
3 Olympics

4 Song Guo<sup>1,2</sup>, Min Hu<sup>1\*</sup>, Qingfeng Guo<sup>1</sup>, Xin Zhang<sup>1</sup>, James J. Schauer<sup>3</sup>,  
5 Renyi Zhang<sup>1,2</sup>

6

7 <sup>1</sup> State Key Joint Laboratory of Environmental Simulation and Pollution Control,  
8 College of Environmental Sciences and Engineering, Peking University, Beijing,  
9 100871, China

10 <sup>2</sup> Department of Atmospheric Science, Texas A&M University, College Station, Texas  
11 77843, USA

12 <sup>3</sup> Environmental Chemistry and Technology Program, Wisconsin State Laboratory of  
13 Hygiene, University of Wisconsin-Madison, Madison, WI, 53706, USA

---

\* Correspondence to: Min Hu (minhu@pku.edu.cn)

## Abstract

To explore the primary and secondary sources of fine organic particles after the aggressive implementation of air pollution controls during 2008 Beijing Olympic Games, 12-hour  $\text{PM}_{2.5}$  were measured at one urban and one upwind rural site during the CAREBEIJING-2008 (Campaigns of Air quality REsearch in BEIJING and surrounding region) summer field campaign. The  $\text{PM}_{2.5}$  concentrations were  $72.5 \pm 43.6 \text{ } \mu\text{g}/\text{m}^3$  and  $64.3 \pm 36.2 \text{ } \mu\text{g}/\text{m}^3$  at urban site and rural site, respectively, which were the lowest in recent years due to the implementation of drastic control measures and favorable weather conditions. Five primary and four secondary fine organic particle sources were quantified using a CMB (chemical mass balance) model and tracer-yield method. Compared with previous studies in Beijing, the contribution of vehicle emission increased, with diesel engine contributing  $16.2 \pm 5.9\%$  and  $14.5 \pm 4.1\%$  to the total organic carbon (OC) concentrations and gasoline vehicles accounting for  $10.3 \pm 8.7\%$  and  $7.9 \pm 6.2\%$  of the OC concentrations at two sites. Due to the implementation of emission control measures, the OC concentrations from important primary sources have been reduced, and secondary formation has become an important contributor to fine organic aerosols. Compared with non-controlled period, primary vehicle contributions were reduced by 30% and 24% in urban and regional area and reductions in the contribution from coal combustion was 57% and 7%, respectively. These results demonstrate the emission control measures significantly alleviated

37 the primary organic particle pollution in and around Beijing. However,  
38 the control effectiveness of secondary organic particles was not  
39 significant.

## 1. Introduction

With rapid economic development and increasing energy consumption, Beijing has experienced severe air pollution and became one of the hotspots for air pollution in the world (Shao et al., 2006). Ambient particles, especially fine particles, have been reported as a crucial air pollutant in Beijing (Guo et al., 2010; Hu and Guo, 2009; Chan and Yao, 2008). Thus, a comprehensive understanding of the fine particle sources is very important for regulatory agencies to develop effective control policies.

Many particle source apportionment studies have been conducted in Beijing during the last a few years. Elemental tracers were previously applied to apportion the particle sources (Song et al., 2007; Song et al., 2006b; Sun et al., 2006). The problem of the elemental method is that it cannot characterize some important sources which emit mainly organic matters other than elemental compounds, e.g. cooking and diesel/gasoline engine exhaust. Sun et al. (Sun et al., 2012) used radiocarbon ( $^{14}\text{C}$ ) analysis to apportion the sources of carbonaceous aerosol. However, radiocarbon analysis can only distinguish fossil carbon from contemporary carbon. Particulate organic matter (POM) accounted for a large fraction in fine particles ( $\text{PM}_{2.5}$ ) (Kanakidou et al., 2005). For instance, 30% -50% of the  $\text{PM}_{2.5}$  was organic matters in Beijing (Lin et al., 2009). For their unique source indication, organic molecular tracers

62 have been successfully used in particle source apportionment recently  
63 (Schauer et al., 1996; Stone et al., 2009; Guo et al., 2012). Organic tracers  
64 have been applied in several fine particle source apportionment studies in  
65 Beijing (Zheng et al., 2005; Wang et al., 2009). Zheng et al. (2005) and  
66 Wang et al. (2009) reported and quantified the source contributions for  
67 fine particles in the year of 2000 and 2005 to 2007, respectively, using a  
68 chemical mass balance (CMB) model. However, the particle sources have  
69 changed significantly in recent years, due to the change of energy  
70 structures, removal of industries, as well as new air quality control  
71 policies.

72 As the host of the 2008 Olympics, more attention was attracted to  
73 Beijing for its severe fine particle pollution. To alleviate this pollution, a  
74 series of control measures were implemented by Beijing Municipal. Guo  
75 et al. (2012) briefly reported the major particle sources in Beijing 2008  
76 but mainly focusing on the secondary organic aerosols formation. It is  
77 very important to compare the particle source contributions with previous  
78 studies to explore the primary particle source changes in recent years.

79 It is also essential to evaluate the effectiveness of the control measures  
80 for policy making, as well as better scientific understanding.  
81 Satellite-based and modeling studies indicated significant particle  
82 pollution reduction during the Olympic period (Cermak and Knutti,  
83 2009; Wang et al., 2010c). Huang et al. (Huang et al., 2010) also reported

the high time resolution particulate chemical compositions by using Aerodyne High-Resolution Time-of-Flight Aerosol Mass Spectrometer (HR-ToF-AMS), and found all major species during Olympics were low due to both control measures and favorable weather conditions. However, simply exploring variations in fine particle pollution cannot distinguish the effects between emission control and meteorological condition. Liu et al. (Liu et al., 2012) used a statistical model to evaluate the  $PM_{2.5}$  control effects, nevertheless the results only showed the integrated effects of all control measures but not specific sources. To quantitatively evaluate the control effect to specific sources, source apportionment is a direct and more effective way.

In the present study, ambient fine particles ( $PM_{2.5}$ ) were collected at an urban site and an upwind rural site in Beijing before, during and after the Olympic Games in 2008. Particulate organic matters (POM) including primary and secondary organic tracers were measured by gas chromatography/mass spectrometry (GC-MS). CMB model and tracer-yield method were employed to apportion the primary and secondary particulate organic sources. The results were compared with previous work to explore the change of particulate sources in the recent years. The variations of both primary and secondary particulate organic sources in different control periods were also discussed to evaluate the emission control effectiveness. The results of this work can improve our

understanding of the emission control effect on air pollution and provides basis data set for regional air quality model.

## **2. Experimental**

### **2.1 Sampling**

12-h ambient fine particle ( $PM_{2.5}$ ) samples were collected by using Four-Channel samplers (TH-16A, Tianhong, China) simultaneously at an urban site Peking University (PKU) and an upwind rural site Yufa during the CAREBEIJING-2008 (Campaigns of Air Quality REsearch in BEIJING and surrounding region) summer field campaign from 16<sup>th</sup> July to 31<sup>st</sup> August, 2008. The detailed site descriptions are in previous papers (Huang et al., 2006;Guo et al., 2010;Zheng et al., 2011). PKU (39°59'21" N, 116°18'25" E), the urban site locates at the campus of Peking University. Yufa, (39°30'49" N, 116°18'15" E) the rural site, is 53 km south from the PKU site. During the campaign the wind was mainly from south and southwest, so Yufa was an upwind rural site. Around Yufa site was nothing but farmland. The pollution concentrations at Yufa can be considered as the regional pollution level (Guo et al., 2012).

Each set of the samples consists of one Teflon filter and three quartz filters. Totally 74 sets (36 day-samples and 38 night-samples) of samples at PKU and 99 sets (44 day-samples and 45 night-samples) of samples at Yufa were collected, respectively.

### **2.2 Chemical analysis**

The Teflon filters were ultrasonically extracted by de-ionized water, and analyzed by ion-chromatography (DIONEX, ICS-2500) to measure major water-soluble ions. The analysis methods were in the previous paper (Hu et al., 2005). An area of 1.45 cm<sup>2</sup> of the quartz filters was punched to analyze EC and OC using a Sunset Laboratory-based carbon analyzer (Birch and Cary, 1996). The remaining two quartz filters were then extracted and analyzed to determine the chemical composition of particulate organic matters. The detailed analytical method for particulate organic species has been described previously (Guo et al., 2012). In brief, 29 kinds of internal standard compounds (including ketopinic acid (KPA), twenty-six deuterated species and two carbon isotope (<sup>13</sup>C)) were spiked in the samples, and then the filters were ultrasonically extracted with organic solution and concentrated to 0.5-1 mL. About 200-300 μL extract of each sample was derivatized with BSTFA (BSTFA/TMCS, 99:1; Supelco). The derivatized and underivatized fractions were analyzed using an Agilent GC-MS system (6890 plus GC-5973N MSD). In total 164 organic compounds were quantified, including primary and secondary organic tracers. The names and the concentrations of these particulate organic species were listed in table S2 in supplement material.

### **2.3 Source apportionment**

A chemical mass balance (EPA, version CMB 8.2) receptor model was employed to apportion the primary sources of OC. Five major



primary sources were chosen in the model and the source profiles were from literatures, including vegetative detritus (Rogge et al., 1993), biomass burning (Schauer et al., 2001), coal burning (Zheng et al., 2005), non-catalyzed engines and diesel engines (Lough et al., 2007; Schauer et al., 1999, 2002). The tracers which were applied to CMB model were marked in table S2 in supplement material. Because there is no well-developed source profiles for coal burning of Beijing, source profile for coal combustion from Zheng et al. (2005)'s work was used in this study. The profile was obtained from the analysis of direct emissions from the burning of Datong coal in Yunguang, China. Cholesterol, historically used as a tracer for Chinese cooking (Song et al., 2006a) was not detected in most samples, indicating that cooking source was an insignificant contributor during the study period. In addition, when cooking was used in the model, the fitting results of some samples were not reliable (in 32 out of 74 samples at PKU and 21 out of 99 samples at Yufa,  $R^2 < 0.80$ , and  $\chi^2 > 4$ ). Thus to make the results more reliable, cooking was not considered in the model. However, if cooking or other sources contributed to OC, they would be apportioned as other OC.

The sensitivity of the CMB model results was tested by verifying the input biomass burning profiles. Four biomass burning profiles were used, including one from open biomass burning (Lee et al. 2005), two from wood stoves (Fine et al., 2004; Wang et al., 2009), and one from fireplace

(Schauer et al., 2001). The different input source profiles varied the biomass burning contributions by the factor of 0.75-1.33. Other source contributions were impacted slightly (within 10%). The contributions were highest when open biomass burning profile was used. However, open biomass burning was strictly constrained in and around Beijing area during the measurement period. In addition, the contributions were very close (by a factor of 1.09) when wood stove and fireplace source profiles were used. In this study, fireplace profile was used because we want to use the same source profiles as previous work (Zheng et al., 2005) to make the results comparable. This sensitivity test convinced the CMB results were reasonable and reliable.

The criteria for acceptable fitting results included the square regression coefficient of the regression equation  $R^2 > 0.85$ , the sum of square residual Chi-square value  $\chi^2 < 4$ , and the percentage of explained mass to total mass 80–120%.

The contributions of secondary sources were estimated by using tracer-yield method. In this approach, fixed ratios of tracers to OC on the basis of laboratory experiments were used (Kleindienst et al., 2007). Although several uncertainties remained, this method is very useful and the only way to roughly estimate biogenic and anthropogenic SOA from specific VOCs precursors (Kanakidou et al., 2005).

## **2.4 Statistical analysis**

Statistical analyses were used to compare data across locations and time periods. A pair t-test was used to compare the data between two sites. To evaluate the emission control effectiveness, F-tests and t-tests were employed to first qualitatively test whether the pollution concentrations during different periods have statistical differences (significance level 5%). F test is used to decide whether two groups have statistically different variances so that proper t-test can be chosen. T-test was employed to determine whether there are statistical differences between controlled and non-controlled periods. Then the mass concentrations of specific sources, as well as their contributions to total OC, were compared directly between different periods, to quantitatively determine the variation of different source. A summary of the statics from t-test was listed in Table S1 in supplement material.

## **3. Results and discussion**

### **3.1 PM<sub>2.5</sub> chemical composition of and define of different periods**

Fine particles were reported to be the most important air pollutant of Beijing during the last decade. Table 1 lists the mass concentrations of PM<sub>2.5</sub> in summer of Beijing (2000-2008). Zheng et al. (Zheng et al., 2005) reported PM<sub>2.5</sub> was as high as 118.3 µg/m<sup>3</sup> in 2000. The concentrations gradually decreased from 2000 to 2006 (Dan et al., 2004; Song et al., 2007; Zhao et al., 2009; Wang et al., 2009). Due to unfavorable

meteorological condition,  $PM_{2.5}$  increased to  $91.7 \mu g/m^3$  in 2007 (Zhao et al., 2009). During the measurement period of our work,  $PM_{2.5}$  fluctuated drastically from  $8.6-174.4 \mu g/m^3$  at PKU and  $14.3-167.6 \mu g/m^3$  at Yufa, respectively. The concentrations were the lowest in 2008. Although the fine particle pollution of Beijing decreased significantly, the concentrations were still very high compared with those in other regions of the world.

$PM_{2.5}$  chemical compositions during the measurement are presented in Figure 1. Sulfate and organics ( $OC \times 1.6$ ) were the two most important components in  $PM_{2.5}$ . Sulfate accounted for the largest fraction with the percentage of 37% and 37.2% at PKU and Yufa, respectively. In total, secondary inorganic compounds represented 64% and 66% of the fine particles at two sites, indicating the secondary particles were dominant in Beijing summer. Carbonaceous compounds including organic carbon (OC) and elemental carbon (EC) were also important in fine particles. Organics were the second abundant component in  $PM_{2.5}$ , accounting for 20% and 22%. EC was from incomplete combustion, responsible for 4.5% and 4.0% of  $PM_{2.5}$ . A comparison of OC and EC concentrations between this study and previous work was listed in Table 2 (He et al., 2001; Zheng et al., 2005; Wang et al., 2009). The variation of OC was not significant from 2000-2006. However EC decreased a lot due to the primary emission control strategies these years. In 2008 both OC and EC were the lowest

(OC  $10.4 \pm 3.8 \mu\text{g}/\text{m}^3$  at PKU and  $9.4 \pm 2.1 \mu\text{g}/\text{m}^3$  at Yufa; EC  $2.9 \pm 1.0 \mu\text{g}/\text{m}^3$  at PKU  $2.4 \pm 0.8 \mu\text{g}/\text{m}^3$ ). In one hand, the drastic control measures reduced primary emission. On the other hand, the favorable weather condition also contributed to this pollution alleviation (Huang et al., 2010).

For easier discussion and comparison, the measurement was divided into five periods basing on Olympic Games, control measures (mainly focusing traffic control) and weather conditions. The detailed control measures in different periods were listed in table S3 in supplement material. Jul. 15<sup>th</sup> – Jul. 20<sup>th</sup> is defined as Non-Control period (NC). The "odd-even plate number rule" for vehicles (vehicles with odd and even plate can only be driven alternatively) was not implemented, and there was no precipitation during this period; Two periods were defined as Before Olympic period (Jul. 21<sup>st</sup> –Jul. 31<sup>st</sup>: BO-I, Aug. 1<sup>st</sup> –Aug. 8<sup>th</sup>: BO-II) basing on the pollution episode. During both periods, the weather condition was stagnant until the precipitation process at the end of the each period; During Olympic period (DO) was from Aug. 9<sup>th</sup> –Aug. 24<sup>th</sup>. There were several precipitations during this period. The "odd-even plate number rules" were implemented during BO-I, BO-II and DO periods throughout the Beijing area. After Olympic period (AO) was Aug. 25<sup>th</sup> – Aug. 31<sup>st</sup>. The "odd–even plate number rule" was only implemented in urban area (inside the Fifth-Ring road).

### 3.2 Particulate organic species in different periods

In total, 164 kinds of particulate organic species were measured, accounting for  $6.4 \pm 1.6\%$  and  $8.0 \pm 1.3\%$  of the total organic matters (OC\*1.6) at PKU and Yufa, respectively. The average concentrations of these species during the measurement were listed in table S2 in supplement.

The organic compounds (not including secondary organic tracers) were cataloged into 12 classes, and their concentrations in 5 different periods are shown in Figure S1 in supplement material. Detailed information for each class was also given in supplement material (Figure S2-S5). During the measurement, dicarboxylic acid was the most abundant component in all periods except NC period of PKU. Previous studies suggested dicarboxylic acids in Beijing were mainly from secondary formation (Yao et al., 2002;Guo et al., 2010). The abundance of dicarboxylic acids indicated secondary formation was important in summer of Beijing. n-Alkanoic acids were the major component during NC period at PKU. Although n-alkanoic acids could also be from chemical transformation, vehicle emission was their major source in Beijing (Huang et al., 2005). Thus, more traffic in NC period may be responsible for the high n-alkanoic acids concentration. Compared with previous work, most primary compounds such as PAHs, hopanes and sugar compounds were much lower in 2008, maybe due to the strict

emission control measures for Olympics.

A series of n-alkanes ranging from C<sub>12</sub>-C<sub>36</sub> were measured and their concentrations in different periods were presented in Figure S2 in supplement material. The n-alkanes concentrations at two sites were both the highest in NC period and lowest during the Olympics. The maximum concentration species (C<sub>max</sub>) were C<sub>27</sub> or C<sub>29</sub>, and an odd carbon preference was found, indicating the biogenic sources (vegetative matters and biomass burning) were important (Zhang et al., 2007; Rogge et al., 1993). However, low carbon number species such as C<sub>19</sub>, C<sub>20</sub> and C<sub>21</sub> were also high especially at urban site. Low carbon predominance index (CPI) was found at both sites (PKU 1.5, Yufa 1.7). These results suggested fossil fuel combustion were also important in Beijing (Schauer et al., 2002, 1999).

PAHs are generally from a variety of combustion and so are not specific tracers. Natural combustion like volcano could contribute to PAHs, but the majority was from anthropogenic emissions (Ravindra et al., 2008). In this study, total PAHs concentrations in five different periods were 30.3 ng/m<sup>3</sup>, 23.9 ng/m<sup>3</sup>, 20.9 ng/m<sup>3</sup>, 15.7 ng/m<sup>3</sup>, 22.4 ng/m<sup>3</sup> at PKU and 25.5 ng/m<sup>3</sup>, 25.4 ng/m<sup>3</sup>, 24.9 ng/m<sup>3</sup>, 15.8 ng/m<sup>3</sup>, 26.3 ng/m<sup>3</sup> at Yufa. High PAHs concentrations were found in NC period at PKU and NC and AO period at Yufa when traffic control was not conducted. Compared with previous study, PAHs were much lower than those before

(Wang et al., 2009;Zheng et al., 2005). The distributions of PAHs were exhibited in supplement material (figure S3). 5-ring PAHs were dominant at both sites, followed by 4-ring and 6-ring PAHs. These three kinds of PAHs consisted 60% and 70% of the measured PAHs at two sites. This distribution was consistent with the previous work and was attributed to the volatility of PAHs and the high ambient temperature in summer time (Wang et al. 2009).

Saccharide is considered mainly from biomass burning (Simoneit, 1999). Three sugar compounds were quantified: levoglucosan, manosan and galactosan, among which levoglucosan is considered as the best tracer for biomass burning. During the study period levoglucosan concentrations were  $97\pm72$  ng/m<sup>3</sup> and  $120\pm78$  ng/m<sup>3</sup> at PKU and Yufa, respectively, which was lowest in recent years. The higher levoglucosan concentration at Yufa indicated more frequent biomass burning emission at rural area of Beijing. The highest levoglucosan concentrations were found in NC period the lowest in DO period at both sites.

Hopanes are not abundant in atmospheric particles, but they can well indicate the vehicle emission (Simoneit, 1986). Although coal burning can also emit particulate hopanes, their contributions were not as high as vehicle. In addition, in summer of Beijing, coal burning is not very frequent, so the main source of hopanes was still from vehicle. Three hopanes were measured, whose total concentrations in different periods



were 4.0 ng/m<sup>3</sup>, 1.9 ng/m<sup>3</sup>, 2.0 ng/m<sup>3</sup>, 1.3 ng/m<sup>3</sup>, 2.0 ng/m<sup>3</sup> at PKU and 2.6 ng/m<sup>3</sup>, 2.6 ng/m<sup>3</sup>, 2.4 ng/m<sup>3</sup>, 1.8 ng/m<sup>3</sup>, 2.8 ng/m<sup>3</sup> at Yufa (see figure S5). At PKU hopanes were much lower in control periods than those in the non-control period due to the traffic control. The reduction at Yufa was not as significant as that in urban area. Nevertheless the hopane concentrations were also lower in control period, suggesting the traffic control improved the regional air quality.

Detailed discussion about SOA tracers has been made in previous work (Guo et al., 2012). In brief, high concentrations of SOA tracers were found at both sites because of the high regional SOC background (~2 µg C/m<sup>3</sup>). Biogenic SOA tracers were higher at rural site due to higher precursor concentrations. Anthropogenic SOA tracers were comparable between urban and rural sites, implying the anthropogenic particle pollution was widespread in large scale of Beijing and affected regional air pollution.

### **3.3 Source apportionment of ambient organic carbon**

Primary and secondary organic tracers were applied in CMB model and tracer-yield method to estimate the contributions of primary and secondary particulate organic sources to total OC. Five primary sources and four secondary organic carbons (SOCs) derived from isoprene, α-pinene, β-caryophyllene were apportioned, accounted for 73.8±9.7% (average ± standard deviation, following as the same) and 79.6±10.1% of

the measured OC at PKU and Yufa, respectively. The results were listed in Table 3, compared with those from previous source apportionment studies in Beijing (Wang et al., 2009;Zheng et al., 2005).

Vehicle emission was a very important source of fine organic particles in Beijing. It was reported that the number of vehicles in Beijing increased 20-25% per year (China Statistical Yearbook 2011, <http://www.stats.gov.cn/tjsj/ndsj/2011/indexeh.htm>). The increasing vehicle amount has lead to serious fine particle pollution in Beijing (Chan and Yao, 2008). In our work, diesel and gasoline vehicle emissions were the major contributors to ambient organic particles with the contributions of  $16.2\pm5.9\%$  and  $14.5\pm4.1\%$  by diesel engines and  $10.3\pm8.7\%$  and  $7.9\pm6.2\%$  by gasoline vehicles at PKU and Yufa, respectively. The higher contributions at PKU were reasonable because there were more vehicles in urban area. Compared with previous work, vehicle emission contributed more in 2008 than previous years. However, considering the OC concentrations, the absolute concentrations attributing to vehicle emission were lowest in 2008. A diesel engine contribution was reduced more significant than gasoline engines. On one hand, gasoline cars were more constrained during Olympics. On the other hand, the number of public vehicles like buses was increased during Olympics, and these vehicles mainly used diesel engines.

Biomass burning was also an important source for ambient particles

in Beijing. Although open biomass burning was strictly forbidden in Beijing, and its contribution to organic particles could be considered to be zero (Cao et al., 2005), wood consumed as domestic fuel in rural area also greatly contributed to ambient fine particles. In addition, the biomass burning from nearby province could also influence the air quality of Beijing. In our work biomass burning contributed  $7.5 \pm 5.5\%$  and  $8.9 \pm 4.9\%$  to measured OC at PKU and Yufa. The higher contribution at Yufa was mainly due to more domestic wood using and transport from surrounding area. The biomass burning contribution was lower than those in the year 2005 and 2006.

Coal is the dominant fuel in Beijing. About 68.7% of the total energy consumption of China in 2008 was coal (China Statistical Yearbook 2008, <http://www.stats.gov.cn/tjsj/ndsj/2008/indexeh.htm>). In our work, coal burning accounted for  $5.8 \pm 5.5\%$  and  $7.8 \pm 4.6\%$  of the measured OC. This result was comparable with the result in 2000, but higher than that reported in 2005 and 2006. For the total OC was much lower in 2008, the absolute coal burning OC was the lowest in recent years. The alleviation of coal burning pollution was mainly due to the more strict restriction and some emission reductions such as temporary closures of factories. However, the rural area was still affected significantly by coal combustion. Although Coal cannot be used within the central urban area of Beijing, large amount of coal was still consumed in rural area of

Beijing. In addition, the most common coal usage in rural area was residential coal, which has higher emission factors (Zhang et al., 2008). Some emission control measures were also implemented in nearby province, but the measures were much less strict. The industry and other coal usage in surroundings of Beijing also had great contribution to the organic particles of Beijing.

Because there was no previous study on SOCs derived from specific VOCs, no comparison can be made to investigate their variations in recent years. However, unapportioned OC by CMB model was likely being mainly comprised of secondary source particles, so their changes can be in an extent to estimate the variation of the particle secondary sources. In this study,  $60.0 \pm 13.2\%$  and  $59.0 \pm 11.0\%$  of the OC cannot be apportioned by CMB, which was considered mainly to consist of secondary organic carbon, and this fraction was the largest in 2008, suggesting SOC has become an important contributor to organic particles.

### **3.4 Variation of organic particle sources in different periods**

In order to improve air quality for Olympic, Beijing Municipal government implemented a series of measures to alleviate the particle pollution in Beijing. It provided a good opportunity to understand the impact of reduced emissions on air pollution. The OC concentrations from major primary and secondary sources and their contributions to total ambient organic carbon were shown in figure 2 and table 4. Statistical

analyses were conducted to evaluate the emission control effectiveness, and the statistical results were shown in Table S1 in supplement material.

Vehicles were the major controlled emission during the Olympics. The detailed control measures were listed in Table S1 in supplement material. At urban site PKU, vehicle emission was the major source of organic particles during Non-Control period, contributing  $1.69 \pm 0.42 \mu\text{g}/\text{m}^3$  by diesel vehicles and  $1.54 \pm 1.21 \mu\text{g}/\text{m}^3$  by gasoline vehicles. Their contributions decreased considerably during the next four controlled periods. An F-test result showed the OC concentration attributed by vehicles in NC period was significantly higher than those in the other controlled periods. The OC concentrations from gasoline vehicle decreased significantly, reduced by 58%, 47%, 62% and 44% compared with the NC period, with the overall average reduction of 54%. The OC concentration from diesel vehicles also decreased but not as significantly as that from gasoline vehicles. The OC concentrations were reduced by 4%, 7%, 31% and 28% during the four controlled periods. The average reduction was 13%. The reduction of absolute concentrations also effected by weather conditions, so cannot better evaluate the effectiveness of the control measures. To explore the variations of source contributions (percentages of specific sources to total OC) is a better way to reflect the impact of the emission control measures. During the NC period, gasoline vehicle emission contributed 15.4% of the measured OC. The

contribution was reduced by 61%, 48%, 49% and 36% during the BO-I, BO-II, AO and AO periods. Compared between non-control and the whole control period, the average reduction was 52%. Correspondingly, the contributions of diesel vehicle emission were reduced by 11%. All in all, the contributions of vehicle emissions were reduced by 30% in average. Although official estimation of the traffic reduction was about 60%, there was no exact measured data. However, our result was consistent with the statistical model result about total PM<sub>2.5</sub> reduction from Liu et al. (Liu et al., 2012).

Coal combustion OC also decreased during the four control periods with the reduction of 57%, 66%, 65% and 39% by concentration and 61%, 66%, 55% and 30% by contribution (ratio of specific source to total OC). The average reduction was 59% and 57% in concentration and contribution, respectively. The contributions of biomass burning and vegetative detritus showed no obvious differences between control and non-control periods (F-test result), indicating these two sources did not have great changes. The results in this study indicated the control measures have significantly improved the urban air quality of Beijing.

Yufa was an upwind rural site and a regional site. The variation in source contributions at Yufa can evaluate the control effectiveness in the regional scale of Beijing. Vehicle emission was the major source of organic particles at Yufa, and their contributions decreased during traffic

control periods. Although the reduction was not as much as that at PKU, the contributions of gasoline vehicle emission also decreased considerably by 45%, 62%, 55% and 54% in four control periods, and the diesel vehicle contribution was reduced by 10%, 27%, 20% and 14%. The average reduction of the contribution was 39% for gasoline vehicles and 14% for diesel vehicle. The contribution of two kinds of vehicle emission was averagely reduced by 24%. Particle pollution from coal burning was also cut down by 17% in concentration and by 7% in contribution to total OC. The reduction of coal burning pollution was not as significant as that in the urban area, maybe because the Yufa was more affected by the emissions from neighbor provinces. Nevertheless, we can still conclude that the control measures greatly alleviated the regional primary organic particle pollution.

Secondary formation process including nucleation, gas-to-particle transformation and multiphase reaction was poorly understood up to day (Zhang et al., 2012; Hallquist et al., 2009; Zhang, 2010). The secondary organic aerosols (SOA) formation is very complicated, and can be affected by various factors such as precursors, ambient temperature, humidity and particle acidity (Wang et al., 2010b; Zhao et al., 2006; Saathoff et al., 2009). In this work, SOCs derived from isoprene,  $\alpha$ -pinene,  $\beta$ -caryophyllene and toluene were apportioned, and their concentrations and contributions to measured OC in different periods

were presented in table 4 and figure 2. Three major SOC<sub>s</sub> from toluene, isoprene and  $\alpha$ -pinene showed similar trend at PKU or Yufa. The highest SOC concentrations appeared during the BO-I period at PKU and BO-II period at Yufa when the conditions were favorable for SOA formation and accumulation: high radiation, temperature, humidity, O<sub>3</sub> concentration and no precipitation.

At urban site PKU, the contributions of apportioned SOC<sub>s</sub> to measured OC during the five periods were 35.8%, 38.4%, 31.0%, 33.4% and 27.9%. A t-test result showed that the anthropogenic SOC contributions did not have significant differences between controlled and non-controlled period. However, the biogenic SOC contributions such as isoprene SOC had statistical difference, with an increase of 8% during controlled period. For biogenic VOC emission cannot be controlled, the biogenic SOC<sub>s</sub> were considered to be affected mainly by weather conditions. The ratio of anthropogenic to biogenic SOC can simply explore whether the control measures had impact on anthropogenic SOC formation. This ratio was 2.0 in non-control period which is higher than that in controlled period (1.7), implying the emission control to a certain extend constrained the anthropogenic SOC formation in urban area. Wang et al. (Wang et al., 2010a) reported the toluene mixing ratio decreased during the traffic control period. The lower precursor concentrations may lead to the lower anthropogenic SOC concentration. However, it is



difficult to quantitatively evaluate this reduction.

At rural site Yufa, SOC<sub>s</sub> contributed 27.4%, 34.7%, 45.3%, 39.1% and 32.7% to measured OC. Both concentrations of biogenic and anthropogenic SOC<sub>s</sub> were higher in the controlled period. The anthropogenic to biogenic SOC ratios did not have significant difference between control and non-control period. In conclude emission control in an extent constrained the anthropogenic SOC formation but not significantly. Weather conditions were still the major influencing factors on SOC formation.

#### **4 Conclusion**

PM<sub>2.5</sub> and carbonaceous components during 2008 Beijing Olympic Games were the lowest in the recent years. The improvement of air quality was mainly due to the drastic emission control measures and also favorable weather conditions. Five major primary sources and four SOC<sub>s</sub> were identified by CMB model and tracer-yield method. Compared with the previous source apportionment work, vehicle emission has become the major source of organic particles these years, in both urban and regional scale. However, due to the emission control measures, the absolute concentrations from vehicles were gradually reduced, especially in 2008 when more strict measures were implemented. For the same reason, coal combustion and biomass burning OC both decreased and were the lowest in 2008. Organic particles transported from nearby

province also contributed organic particles in rural Beijing. Secondary formation became a significant contributor to ambient fine organic particles in Beijing. Nevertheless the absolute SOC concentrations also decreased compared with those in previous years.

The effectiveness of emission control measures was evaluated. The vehicle contributions were reduced by 30% in urban area and 24% in a regional scale. Contribution from coal combustion was also reduced by 57% in urban area and 7% in regional scale. All these results suggested the emission control measures significantly alleviated the organic particle pollution in and around Beijing. The anthropogenic SOC formation in was in a certain extend constrained due to the reduction of precursor concentrations. However, the SOC control effectiveness was not significant. Weather condition was the major influencing factor on SOC formation. Reducing oxidant concentrations such as O<sub>3</sub> may be a good way to reduce secondary particle pollution. To improve the regional air quality, especially reduced the SOC pollution, more strict control measures should be implemented in a lager regional scale in the future.

## **Acknowledgement**

This work is supported by the National Natural Science Foundation of China (21025728, 20977001, 21190052), the China Ministry of Environmental Protection's Special Funds for Scientific Research on

Public Welfare (201009002).

## Reference:

- Birch, M. E., and Cary, R. A.: Elemental carbon-based method for monitoring occupational exposures to particulate diesel exhaust, *Aerosol Sci Tech*, 25, 221-241, Doi 10.1080/02786829608965393, 1996.
- Cao, G., Zhang, X., Wang, D., and Zheng, F.: Inventory of emissions of pollutants from open burning crop residue, *J. Agro-Environ. Sci.*, 24, 800-804, 2005.
- Cermak, J., and Knutti, R.: Beijing Olympics as an aerosol field experiment, *Geophys Res Lett*, 36, ArtId L10806 Doi 10.1029/2009gl038572, 2009.
- Chan, C. K., and Yao, X.: Air pollution in mega cities in China, *Atmos Environ*, 42, 1-42, DOI 10.1016/j.atmosenv.2007.09.003, 2008.
- Dan, M., Zhuang, G. S., Li, X. X., Tao, H. R., and Zhuang, Y. H.: The characteristics of carbonaceous species and their sources in PM<sub>2.5</sub> in Beijing, *Atmos Environ*, 38, 3443-3452, DOI 10.1016/j.atmosenv.2004.02.052, 2004.
- Fine, P. M., Cass, G. R., and Simoneit, B. R. T.: Chemical characterization of fine particle emissions from the fireplace combustion of wood types grown in the Midwestern and Western United States, *Environ Eng Sci*, 21, 387-409, 2004.
- Guo, S., Hu, M., Wang, Z. B., Slanina, J., and Zhao, Y. L.: Size-resolved aerosol water-soluble ionic compositions in the summer of Beijing: implication of regional secondary formation, *Atmos Chem Phys*, 10, 947-959, 2010.
- Guo, S., Hu, M., Guo, Q., Zhang, X., Zheng, M., Zheng, J., Chang, C.-C., Schauer, J. J., and Zhang, R.: Primary Sources and Secondary Formation of Organic Aerosols in Beijing, China, *Environ Sci Technol*, 46, 9846-9853, DOI: 10.1021/es2042564, 2012.
- Hallquist, M., Wenger, J. C., Baltensperger, U., Rudich, Y., Simpson, D., Claeys, M., Dommen, J., Donahue, N. M., George, C., Goldstein, A. H., Hamilton, J. F., Herrmann, H., Hoffmann, T., Iinuma, Y., Jang, M., Jenkin, M. E., Jimenez, J. L., Kiendler-Scharr, A., Maenhaut, W., McFiggans, G., Mentel, T. F., Monod, A., Prevot, A. S. H., Seinfeld, J. H., Surratt, J. D., Szmigielski, R., and Wildt, J.: The formation, properties and impact of secondary organic aerosol: current and emerging issues, *Atmos Chem Phys*, 9, 5155-5236, 2009.
- He, K. B., Yang, F. M., Ma, Y. L., Zhang, Q., Yao, X. H., Chan, C. K., Cadle, S., Chan, T., and Mulawa, P.: The characteristics of PM<sub>2.5</sub> in Beijing, China, *Atmos Environ*, 35, 4959-4970, 2001.
- Hu, M., Zhang, J., and Wu, Z. J.: Chemical compositions of precipitation and scavenging of particles in Beijing, *Sci China Ser B*, 48, 265-272, Doi 10.1360/042004-49, 2005.
- Hu, M., and Guo, S.: Particle pollution in Beijing: features, source and secondary formation, *IGAC Newsletter*, 42, 10-18, 2009.
- Huang, X. F., Hu, M., He, L. Y., and Tang, X. Y.: Chemical characterization of

- water-soluble organic acids in PM<sub>2.5</sub> in Beijing, China, *Atmos Environ*, 39, 2819-2827, DOI 10.1016/j.atmosenv.2004.08.038, 2005.
- Huang, X. F., He, L. Y., Hu, M., and Zhang, Y. H.: Annual variation of particulate organic compounds in PM<sub>2.5</sub> in the urban atmosphere of Beijing, *Atmos Environ*, 40, 2449-2458, DOI 10.1016/j.atmosenv.2005.12.039, 2006.
- Huang, X. F., He, L. Y., Hu, M., Canagaratna, M. R., Sun, Y., Zhang, Q., Zhu, T., Xue, L., Zeng, L. W., Liu, X. G., Zhang, Y. H., Jayne, J. T., Ng, N. L., and Worsnop, D. R.: Highly time-resolved chemical characterization of atmospheric submicron particles during 2008 Beijing Olympic Games using an Aerodyne High-Resolution Aerosol Mass Spectrometer, *Atmos Chem Phys*, 10, 8933-8945, DOI 10.5194/acp-10-8933-2010, 2010.
- Kanakidou, M., Seinfeld, J. H., Pandis, S. N., Barnes, I., Dentener, F. J., Facchini, M. C., Van Dingenen, R., Ervens, B., Nenes, A., Nielsen, C. J., Swietlicki, E., Putaud, J. P., Balkanski, Y., Fuzzi, S., Horth, J., Moortgat, G. K., Winterhalter, R., Myhre, C. E. L., Tsigaridis, K., Vignati, E., Stephanou, E. G., and Wilson, J.: Organic aerosol and global climate modelling: a review, *Atmos Chem Phys*, 5, 1053-1123, 2005.
- Kleindienst, T. E., Jaoui, M., Lewandowski, M., Offenberg, J. H., Lewis, C. W., Bhawe, P. V., and Edney, E. O.: Estimates of the contributions of biogenic and anthropogenic hydrocarbons to secondary organic aerosol at a southeastern US location, *Atmos Environ*, 41, 8288-8300, DOI 10.1016/j.atmosenv.2007.06.045, 2007.
- Lin, P., Hu, M., Deng, Z., Slanina, J., Han, S., Kondo, Y., Takegawa, N., Miyazaki, Y., Zhao, Y., and Sugimoto, N.: Seasonal and diurnal variations of organic carbon in PM<sub>2.5</sub> in Beijing and the estimation of secondary organic carbon, *J Geophys Res-Atmos*, 114, -, ArtID00g11, Doi 10.1029/2008jd010902, 2009.
- Liu, Y., He, K. B., Li, S. S., Wang, Z. X., Christiani, D. C., and Koutrakis, P.: A statistical model to evaluate the effectiveness of PM<sub>2.5</sub> emissions control during the Beijing 2008 Olympic Games, *Environ Int*, 44, 100-105, DOI 10.1016/j.envint.2012.02.003, 2012.
- Lough, G. C., Christensen, C. G., Schauer, J. J., Tortorelli, J., Mani, E., Lawson, D. R., Clark, N. N., and Gabele, P. A.: Development of molecular marker source profiles for emissions from on-road gasoline and diesel vehicle fleets, *J Air Waste Manage*, 57, 1190-1199, Doi 10.3155/1047-3289.57.10.1190, 2007.
- Ravindra, K., Sokhi, R., and Van Grieken, R.: Atmospheric polycyclic aromatic hydrocarbons: Source attribution, emission factors and regulation, *Atmos Environ*, 42, 2895-2921, DOI 10.1016/j.atmosenv.2007.12.010, 2008.
- Rogge, W. F., Hildemann, L. M., Mazurek, M. A., Cass, G. R., and Simoneit, B. R. T.: Sources of Fine Organic Aerosol .4. Particulate Abrasion Products from Leaf Surfaces of Urban Plants, *Environ Sci Technol*, 27, 2700-2711, 1993.
- Saathoff, H., Naumann, K. H., Mohler, O., Jonsson, A. M., Hallquist, M., Kiendler-Scharr, A., Mentel, T. F., Tillmann, R., and Schurath, U.: Temperature dependence of yields of secondary organic aerosols from the ozonolysis of alpha-pinene and limonene, *Atmos Chem Phys*, 9, 1551-1577, 2009.

- Schauer, J. J., Rogge, W. F., Hildemann, L. M., Mazurek, M. A., and Cass, G. R.: Source apportionment of airborne particulate matter using organic compounds as tracers, *Atmos Environ*, 30, 3837-3855, 1996.
- Schauer, J. J., Kleeman, M. J., Cass, G. R., and Simoneit, B. R. T.: Measurement of emissions from air pollution sources. 2. C-1 through C-30 organic compounds from medium duty diesel trucks, *Environ Sci Technol*, 33, 1578-1587, 1999.
- Schauer, J. J., Kleeman, M. J., Cass, G. R., and Simoneit, B. R. T.: Measurement of emissions from air pollution sources. 3. C-1-C-29 organic compounds from fireplace combustion of wood, *Environ Sci Technol*, 35, 1716-1728, 2001.
- Schauer, J. J., Kleeman, M. J., Cass, G. R., and Simoneit, B. R. T.: Measurement of emissions from air pollution sources. 5. C-1-C-32 organic compounds from gasoline-powered motor vehicles, *Environ Sci Technol*, 36, 1169-1180, Doi 10.1021/Es0108077, 2002.
- Shao, M., Tang, X. Y., Zhang, Y. H., and Li, W. J.: City clusters in China: air and surface water pollution, *Front Ecol Environ*, 4, 353-361, 2006.
- Simoneit, B. R. T.: Characterization of Organic-Constituents in Aerosols in Relation to Their Origin and Transport - a Review, *Int J Environ an Ch*, 23, 207-237, 1986.
- Simoneit, B. R. T.: A review of biomarker compounds as source indicators and tracers for air pollution, *Environ Sci Pollut R*, 6, 159-169, 1999.
- Song, Y., Zhang, Y. H., Xie, S. D., Zeng, L. M., Zheng, M., Salmon, L. G., Shao, M., and Slanina, S.: Source apportionment of PM<sub>2.5</sub> in Beijing by positive matrix factorization (vol 40, pg 1526, 2006), *Atmos Environ*, 40, 7661-7662, DOI 10.1016/j.atmosenv.2006.09.006, 2006a.
- Song, Y., Zhang, Y. H., Xie, S. D., Zeng, L. M., Zheng, M., Salmon, L. G., Shao, M., and Slanina, S.: Source apportionment of PM<sub>2.5</sub> in Beijing by positive matrix factorization, *Atmos Environ*, 40, 1526-1537, DOI 10.1016/j.atmosenv.2005.10.039, 2006b.
- Song, Y., Tang, X. Y., Xie, S. D., Zhang, Y. H., Wei, Y. J., Zhang, M. S., Zeng, L. M., and Lu, S. H.: Source apportionment of PM<sub>2.5</sub> in Beijing in 2004, *J Hazard Mater*, 146, 124-130, DOI 10.1016/j.jhazmat.2006.11.058, 2007.
- Stone, E. A., Zhou, J. B., Snyder, D. C., Rutter, A. P., Mieritz, M., and Schauer, J. J.: A Comparison of Summertime Secondary Organic Aerosol Source Contributions at Contrasting Urban Locations, *Environ Sci Technol*, 43, 3448-3454, Doi 10.1021/Es8025209, 2009.
- Sun, X. S., Hu, M., Guo, S., Liu, K. X., and Zhou, L. P.: C-14-Based source assessment of carbonaceous aerosols at a rural site, *Atmos Environ*, 50, 36-40, DOI 10.1016/j.atmosenv.2012.01.008, 2012.
- Sun, Y., Zhuang, G. S., Zhang, W. J., Wang, Y., and Zhuang, Y. H.: Characteristics and sources of lead pollution after phasing out leaded gasoline in Beijing, *Atmos Environ*, 40, 2973-2985, DOI 10.1016/j.atmosenv.2005.12.032, 2006.
- Wang, B., Shao, M., Lu, S. H., Yuan, B., Zhao, Y., Wang, M., Zhang, S. Q., and Wu, D.: Variation of ambient non-methane hydrocarbons in Beijing city in summer 2008, *Atmos Chem Phys*, 10, 5911-5923, 10.5194/acp-10-5911-2010, 2010a.
- Wang, L., Khalizov, A. F., Zheng, J., Xu, W., Ma, Y., Lal, V., and Zhang, R. Y.:

- Atmospheric nanoparticles formed from heterogeneous reactions of organics, *Nat Geosci*, 3, 238-242, Doi 10.1038/Ngeo778, 2010b.
- Wang, Q., Shao, M., Zhang, Y., Wei, Y., Hu, M., and Guo, S.: Source apportionment of fine organic aerosols in Beijing, *Atmos Chem Phys*, 9, 8573-8585, 2009.
- Wang, S. X., Zhao, M., Xing, J., Wu, Y., Zhou, Y., Lei, Y., He, K. B., Fu, L. X., and Hao, J. M.: Quantifying the Air Pollutants Emission Reduction during the 2008 Olympic Games in Beijing, *Environ Sci Technol*, 44, 2490-2496, Doi 10.1021/Es9028167, 2010c.
- Yao, X. H., Fang, M., and Chan, C. K.: Size distributions and formation of dicarboxylic acids in atmospheric particles, *Atmos Environ*, 36, 2099-2107, Pii S1352-2310(02)00230-3, 2002.
- Zhang, R. Y.: Getting to the Critical Nucleus of Aerosol Formation, *Science*, 328, 1366-1367, DOI 10.1126/science.1189732, 2010.
- Zhang, R. Y., Khalizov, A., Wang, L., Hu, M., and Xu, W.: Nucleation and Growth of Nanoparticles in the Atmosphere, *Chem Rev*, 112, 1957-2011, Doi 10.1021/Cr2001756, 2012.
- Zhang, Y. X., Shao, M., Zhang, Y. H., Zeng, L. M., He, L. Y., Zhu, B., Wei, Y. J., and Zhu, X. L.: Source profiles of particulate organic matters emitted from cereal straw burnings, *J Environ Sci-China*, 19, 167-175, 2007.
- Zhang, Y. X., Schauer, J. J., Zhang, Y. H., Zeng, L. M., Wei, Y. J., Liu, Y., and Shao, M.: Characteristics of particulate carbon emissions from real-world Chinese coal combustion, *Environ Sci Technol*, 42, 5068-5073, Doi 10.1021/Es7022576, 2008.
- Zhao, J., Levitt, N. P., Zhang, R. Y., and Chen, J. M.: Heterogeneous reactions of methylglyoxal in acidic media: Implications for secondary organic aerosol formation, *Environ Sci Technol*, 40, 7682-7687, Doi 10.1021/Es060610k, 2006.
- Zhao, X. J., Zhang, X. L., Xu, X. F., Xu, J., Meng, W., and Pu, W. W.: Seasonal and diurnal variations of ambient PM<sub>2.5</sub> concentration in urban and rural environments in Beijing, *Atmos Environ*, 43, 2893-2900, DOI 10.1016/j.atmosenv.2009.03.009, 2009.
- Zheng, J., Hu, M., Zhang, R., Yue, D., Wang, Z., Guo, S., Li, X., Bohn, B., Shao, M., He, L., Huang, X., Wiedensohler, A., and Zhu, T.: Measurements of gaseous H<sub>2</sub>SO<sub>4</sub> by AP-ID-CIMS during CAREBeijing 2008 Campaign, *Atmos Chem Phys*, 11, 7755-7765, DOI 10.5194/acp-11-7755-2011, 2011.
- Zheng, M., Salmon, L. G., Schauer, J. J., Zeng, L. M., Kiang, C. S., Zhang, Y. H., and Cass, G. R.: Seasonal trends in PM<sub>2.5</sub> source contributions in Beijing, China, *Atmos Environ*, 39, 3967-3976, DOI 10.1016/j.atmosenv.2005.03.036, 2005.

## Table

Table 1. PM<sub>2.5</sub> mass concentrations in summer of Beijing 2000-2008, average  $\pm$  standard deviation,  $\mu\text{g}/\text{m}^3$

Year/Month	2000/07	2001/07-08	2002/06-07	2003/06	2004/08	2005/06-08	2006/08	2007/06-08	2008/07-08	2008/07-08 <sup>a</sup>
N <sup>b</sup>	5	8	10	3	5	-	29	-	74	99
Concentration	118.3	104.1 $\pm$ 45.1	99.4 $\pm$ 33.9	80.2 $\pm$ 80.2	100.4	84.5 <sup>c</sup>	83.3	91.7 <sup>c</sup>	72.5 $\pm$ 43.6	64.3 $\pm$ 36.2
Literature	Zheng et al., 2005	Dan et al. 2004	Dan et al. 2004	Dan et al. 2004	Song et al. 2007	Zhao et al., 2009	Wang et al., 2009	Zhao et al., 2009	This study	This study

<sup>a</sup> Rural site Yufa, all other measurements were conducted at urban site

<sup>b</sup> Number of samples

<sup>c</sup> PM<sub>2.5</sub> was measured by online instrument Tapered Element Oscillating Microbalance (TEOM)

Table 2. Concentrations of organic carbon (OC) and elemental carbon (EC) in PM<sub>2.5</sub>, µg/m<sup>3</sup>

Year/Month	1999/07	2000/07	2005/08	2006/08	2008/07-08 <sup>a</sup>	2008/07-08 <sup>b</sup>
N <sup>c</sup>	12	5	46	43	74	99
OC	6.27	20.9	16.1	22.1	9.2±3.3	8.9±3.1
EC	9.4	3.0	3.2	5.5	2.6±1.3	2.3±1.0
Reference	He et al. ,2001	Zheng et al. 2005	Wang et al., 2009	Wang et al., 2009	This study	This study

<sup>a</sup> PKU site, <sup>b</sup> Yufa site, <sup>c</sup> Number of samples



Table 3 Comparison of source contributions to fine particulate organic carbon in summer of Beijing, average  $\pm$ standard deviation (%)

Year/Site	2000	2005	2006	2008	2008
	PKU	PKU	PKU	PKU	Yufa
Gasoline vehicles	17.3 $\pm$ 6.9	10.6 $\pm$ 2.8	7.1 $\pm$ 1.5	10.3 $\pm$ 8.7	7.9 $\pm$ 6.2
Diesel vehicles		9.6 $\pm$ 6.2	5.7 $\pm$ 1.5	16.2 $\pm$ 5.9	14.5 $\pm$ 4.1
Vegetative detritus	1.4 $\pm$ 0.9	0.3 $\pm$ 0.2	0.3 $\pm$ 0.2	1.4 $\pm$ 0.8	1.9 $\pm$ 1.5
Dust	11.7 $\pm$ 8.1				
Wood burning	16.1 $\pm$ 18.1	10.4 $\pm$ 3.5	8.2 $\pm$ 2.0	7.5 $\pm$ 5.5	8.9 $\pm$ 4.9
Straw burning		1.3 $\pm$ 0.7	1.7 $\pm$ 2.8		
Coal burning	9.8 $\pm$ 3.9	2.1 $\pm$ 2.2	1.8 $\pm$ 0.8	5.8 $\pm$ 5.5	7.8 $\pm$ 4.6
Cigarette	3.1 $\pm$ 2.2				
Cooking		24.5 $\pm$ 4.2	23.8 $\pm$ 4.3		
isoprene SOC				9.7 $\pm$ 5.4 <sup>*</sup>	13.9 $\pm$ 9.1 <sup>*</sup>
$\alpha$ -pinene SOC				5.1 $\pm$ 2.0 <sup>*</sup>	5.6 $\pm$ 1.9 <sup>*</sup>
toluene SOC				17.4 $\pm$ 7.6 <sup>*</sup>	17.3 $\pm$ 6.9 <sup>*</sup>
$\beta$ -caryophyllene SOC				2.3 $\pm$ 1.7 <sup>*</sup>	1.7 $\pm$ 1.0 <sup>*</sup>
Other OC <sup>b</sup>	40.6	41.1 $\pm$ 9.7	51.4 $\pm$ 5.6	60.7 $\pm$ 13.2	58.8 $\pm$ 11.0
Reference	Zheng et al. (2005)	Wang et al. (2009)		This study <sup>*</sup> Guo et al. (2012)	

<sup>b</sup> Other OC is unapportioned OC by CMB, SOC<sub>s</sub> were also included in

this portion.

Table 4 The organic carbon concentrations from major primary and secondary sources during different periods ( $\mu\text{g}/\text{m}^3$ )

	NC	BO-I	BO-II	DO	AO	NC	BO-I	BO-II	DO	AO
	PKU					Yufa				
Isoprene SOC	0.82	1.26	1.04	0.67	0.57	1.42	1.46	1.86	1.00	0.95
$\alpha$ -pinene SOC	0.67	0.67	0.39	0.38	0.36	0.45	0.49	0.69	0.50	0.44
Toluene SOC	1.66	2.05	1.61	1.34	1.29	0.99	1.43	2.24	1.55	1.52
$\beta$ -caryophyllene SOC	0.42	0.33	0.08	0.16	0.19	0.09	0.11	0.21	0.18	0.19
Vegetative detritus	0.21	0.13	0.16	0.08	0.12	0.27	0.18	0.18	0.16	0.24
Biomass Burning	0.67	0.87	0.65	0.49	0.59	0.79	0.73	0.93	0.89	0.90
Diesel Vehicles	1.69	1.63	1.57	1.17	1.22	1.76	1.54	1.25	1.12	1.38
Gasoline Vehicles	1.54	0.65	0.81	0.59	0.86	1.23	0.84	0.60	0.57	0.67
Coal Burning	1.08	0.46	0.37	0.38	0.66	0.92	0.82	0.78	0.59	0.92

Note: NC=Non Control, BO=Before Olympic, DO=During Olympic, AO=After Olympic

Figure caption

Figure 1 Chemical composition of  $PM_{2.5}$  at an urban site PKU and an upwind rural site Yufa site

Figure 2 Contributions of primary and secondary sources to ambient organic carbon in different periods. NC=Non-Control, BO=Before Olympic, DO=During Olympic, AO= After Olympic

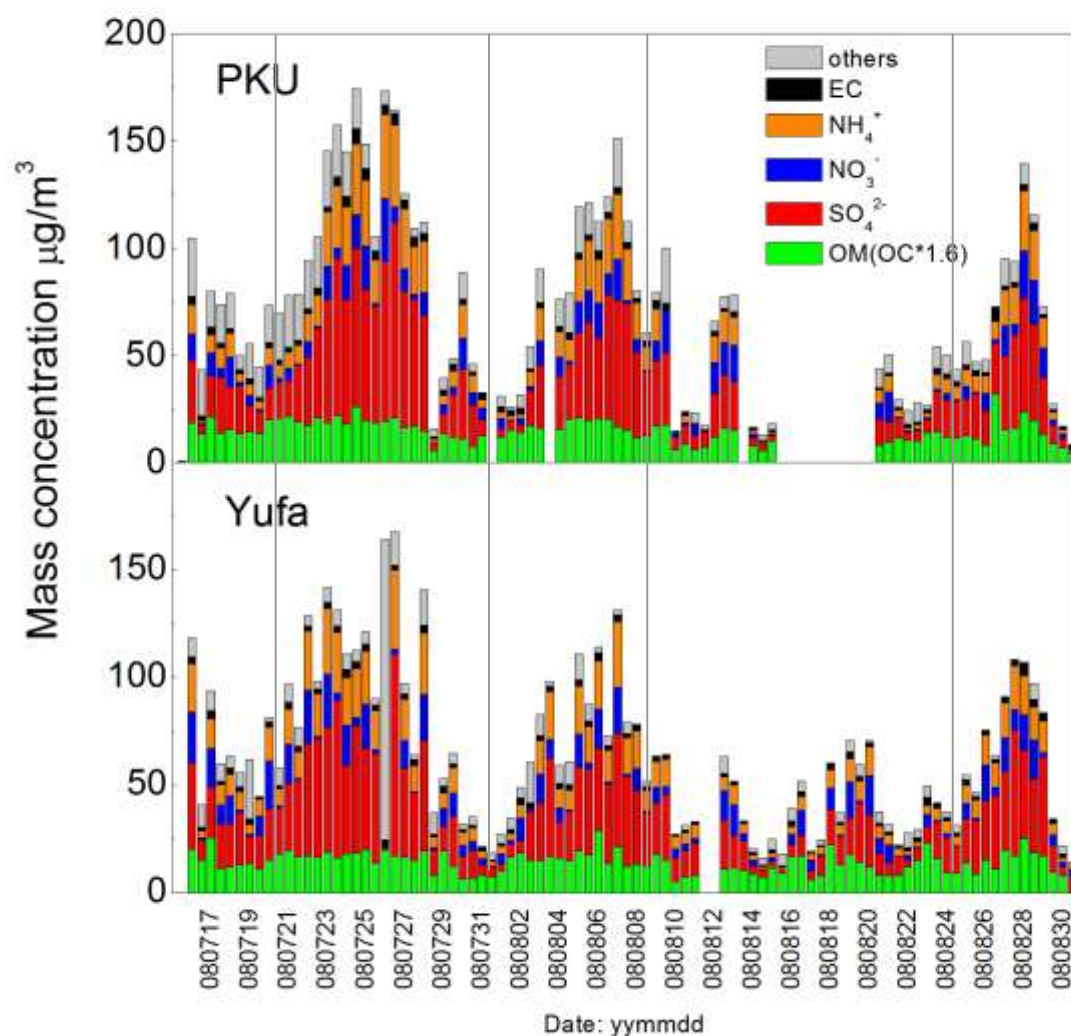


Figure 1 Chemical composition of  $\text{PM}_{2.5}$  at an urban site PKU and an upwind rural site Yufa site, data from 16<sup>th</sup> to 20<sup>th</sup> Aug. of PKU site are not available for technical reason

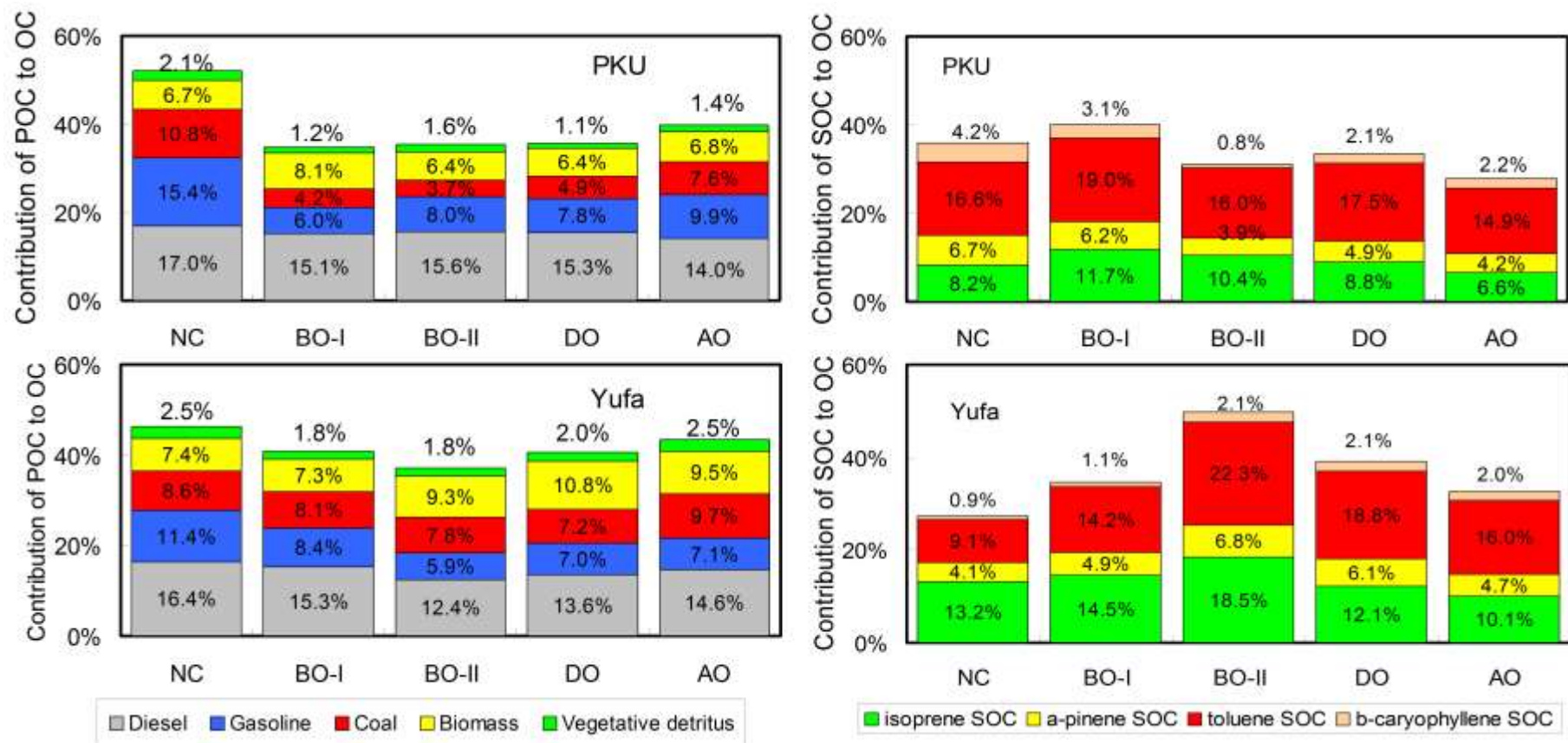


Figure 2 Contributions of primary and secondary sources to ambient organic carbon in different periods. NC=Non-Control, BO=Before Olympic, DO=During Olympic, AO= After Olympic